

KENCO



kenco.com | 800-653-6069

Quality and Dependability

For over thirty years, Kenco has been designing, engineering and manufacturing attachments for heavy construction, utilities and forestry operations, where lifting and moving massive objects are considered a normal part of the job. Our website is packed with photos, video and testimonials from the people who use them every day. Check us out at:

kenco.com



© Copyright 2021, Kenco Corporation. All Rights Reserved.
Kenco reserves the right to change products and specifications without notice.



 YouTube | Visit Kenco Lifting Products



Lifting Attachments

Barrier Lift™	4
Specific Purpose Lifters	6
Double Barrier Lift™	8
Pipe Lift™	10
Pipe Hook™	12
Multilift™	14
Rocklift™	16
Slab Lift™	18
Superlift™	20
Custom Engineering	22
RigMAX Lifting Strap®	24



Excavating Attachments

Excavator Attachments	25
- Buckets	
- Compaction	
- Couplers	
- Grapples	
- Rakes	
- Rippers	
- Thumbs	
Jib Boom	26
Slab Crab®	28



Wheel Loader, Dozer and Forklift

Wheel Loader/Dozer	32
- Buckets	
- Fork Carriage	
- Jib Boom	
- Master Hitch	
- Rakes	
- Snow Plows	
Forklift Adapter	33
UniLug™ System	34

Kenco Barrier Lift™

US PATENT NO: 6331025

The right solution for any of the 60+ unique barrier profiles in use



- *The Original. And still the best.*
- Rugged, built-to-last construction
- Full surface contact without damage to the wall
- Wide 6"-12" grip range standard
- Large elastomer pads provide a superior grip
- Fully automatic operation.
- The strongest, safest, most-trusted barrier lifter in the industry



OPTIONAL: Self Aligning Guides

"Loading time of barrier wall has been cut by more than half."

O'Shea Company, Glen Rock, PA



800-653-6069 kenco.com

Standard Barrier Lift Models

Capstone Lifter	24"-26" Range/1200 cap
Curb Lifter	4"-16" Range/1500 cap
Monument Lifter	4"-16" Range/1500 cap
Bin Block Lifter	24"-30" Range/6000 cap
KL9000 Barrier Lift	6"-12" Range/9000 cap (Standard 10'-16' wall)
KL12000 Barrier Lift	6"-12" Range/12000 cap (Standard 16'-20' wall)
KL16000 Barrier Lift	6"-12" Range/16000 cap (Standard 20'-30' wall)
KL16K4T12 Barrier Lift	4"-12" Range/16000 cap (Standard T wall)
KL16KNG8T18 Barrier Lift	8"-18" Range/16000 cap (Wide top 20'-30' wall)
KL30000 Barrier Lift	6"-12" Range/30000 cap (Standard 30'-40' wall)
KL40000 Barrier Lift	6"-12" Range/40000 cap (Standard 30'-40' wall)
KL9000 Florida Low Profile Barrier Lift	12"-19" Range/9000 cap
KL12000 Texas Low Profile Barrier Lift	28" wall top/12000 cap

Safety X3

The Kenco Barrier Lift is designed by professional engineers to current ANSI/ASME B30.20 and BTH-1 specifications with a minimum safety factor of 3 to 1. It is fabricated by qualified welders to AWS D14.1/D14.1M standards. All lifters meet or exceed federal and state safety compliance standards as well as our own rigid standards.

Custom Sizes and Solutions

Kenco Barrier Lifts provide a safe, easy, and efficient solution for lifting and placing concrete barrier wall. Standard model Barrier Lifts are available in models to handle capacities ranging from 1,500 to 40,000 pounds. Larger capacities can also be achieved by using multiple barrier tongs and other custom designs.

Self Aligning Guides (optional)

Available options include ordering your barrier lift with self aligning guides. The guides extend down from one set of the pads to allow the lifter to align itself with the barrier wall whenever the lifter is lowered into position. This optional feature can also be purchased separately to attach to earlier models of the Kenco Barrier Lift.



What a great product! This is our first job out. We used it to set k-rail for a Cal-trans emergency project. It cut our set time in half!

Merril Ford, McKinleyville, California



YouTube | Visit [Kenco Lifting Products](http://kenco.com)

Kenco Specific Purpose Lifters

More choices when it comes to moving concrete, granite and marble



Curb Lift / Monument Lift

Even though this is our smallest lifter, it'll make a huge impact on productivity.

- Weighs only 120 pounds
- Handles 1500 pound capacities
- Wide 4"-16" adjustable grip range
- 6" by 10" elastomer pads protect smooth granite monument surfaces and provide a secure grip.
- Fully automatic operation



"We used this lifter to move a piece of black granite with an etching right under the pad and absolutely no problems. This tool makes handling large pieces of polished granite a breeze."
Bailey Granite and Monuments, Flat Woods, KY

**KENCO**

800-653-6069 kenco.com

Specific Purpose

Kenco also builds lifters that are designed to conform to an objects' shape, such as our **Bin Block Lifter**. *(right and below)*



Barrier wall specifications for highway/interstate are similar in most locations, and our standard models are manufactured with this in mind. Kenco also keeps an inventory stocked with models to match states that have unique precast barriers characteristics.

Texas Low Profile Barrier Lift

The KL12000TLP Barrier Lift has a 26 to 28 inch grip range that is designed to handle the unique Texas Low Profile Barrier Wall exclusive to the Lone Star state. It will lift 12000 pound capacities.



Florida Low Profile Barrier Lift

A capacity of 9,000 lbs and a grip range of 12" to 19", this lifter is built to match the specs of the Florida Low Profile Barrier Wall. It has 6" X 24" pads and comes standard with alignment legs.



Kenco Double Barrier Lift™

Lift two barriers at one time!

"The Kenco Double Barrier Lifter is a great tool for shifting portable concrete barrier wall. Our project encompasses 6 miles of highway and has approximately 80,000 LF of wall. This project has a 4 year duration, and requires the wall to be shifted several times. The double wall lifter can increase production numbers and save extensive man hours. We use this lifter with our rubber-tired as well as track excavators. The ease of operation makes the lifter a must have for long stretches of wall that need shifted."

Mike Lowe, Project Manager
Kokosing Construction
Cleveland, OH Interstate 271 project

- Rugged, built-to-last construction
- Full surface contact without damage to the wall
- Grip ranges and capacities are engineered to meet specific requirements
- Large elastomer pads provide a superior grip
- Standard alignment legs extend to one side to allow the machine operator to align the lifter to the wall top from inside the cab
- Fully automatic operation
- The strongest, safest, most-trusted barrier lifter in the industry



above: Kokosing Construction is seen using the Double Barrier Lift along Interstate 271 near Cleveland, Ohio.



800-653-6069 kenco.com

Considerations for Size Requirements

Grip ranges and weight capacities are engineered to meet specific requirements. Due to the manner in which the Double Lift engages two walls at once, special consideration must be taken for each lift. When lifting two walls at once, extra forces are applied to the Double Lift not normally seen when lifting just one wall.

Lifting Single Wall Sections

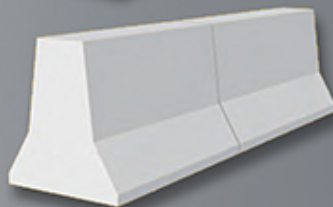
The Standard Double Lift Wall will handle single wall sections that are at least six feet (1.8m) in length and weighing less than 14,000 pounds (6,350kg).



Lifting Two Wall Sections *

Double your production by lifting two eight foot (2.4m) wall sections weighing less than 7000 pounds (3175kg) each.

**Larger model capacities/lengths are available*



Double Barrier Lift Hard at Work

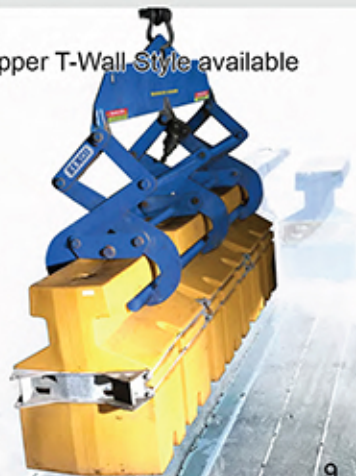
Pick up two barrier walls at a time! Kenco engineers can design a custom lifter to meet your specific requests. One of our customer requests led to the development of the Double Barrier Lift to provide the ability to pick up two wall sections at a time.



above: 'Here is your Kenco barrier clamp in action at the Vancouver Port expansion project! Its always in use, we couldn't do without it'

Alex Mannion, Surveyor

Zipper T-Wall Style available



Kenco Pipe Lift®

US PATENT NO: 6012752

The safest and easiest way to move heavy pipe



- For use with concrete, PVC, DI, or steel
- No hydraulics necessary to operate
- Narrow profile allows for easy removal from tight trenches
- Unique, wide scissor lift ensures a safe grip, even if pipe is picked off center position
- Each lifter will pick up several different pipe diameters



"Compared to how we used to move pipe with straps and cable, the Pipe Lift is much safer, saves a lot of time, and increases productivity."

Immel Excavating, Greenville, WI



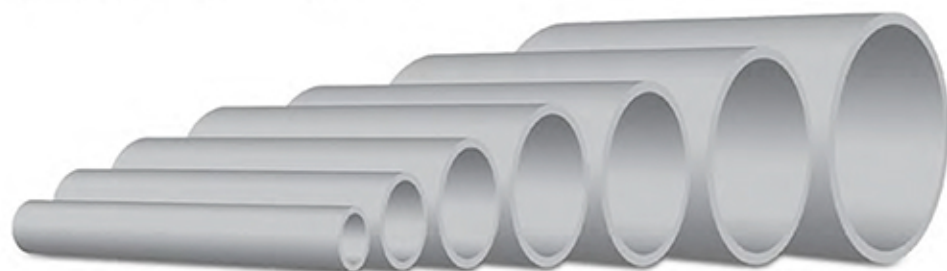
800-653-6069 kenco.com

Standard Models and Sizes

Standard Pipe-Lift models and handling capacity
(Minimum - Maximum Outside Diameters)

PL1500 *	PL2000 *	PL2150 *	PL2250 *	PL2500 *	PL2750 *
4.5"-9.05"	8.63"-13.2"	10.75"-15.3"	12.75"-17.4"	14"-23"	18"-25.8"
PL3000	PL3500	PL4500	PL7000	PL8500	
23"-32"	30"-38.5"	36"-45.5"	42"-52.5"	48"-59.5"	

* Grip plates are fully rubber lined.



Fully Automatic Operation for Increased Production

Double your production output versus the sling and chain methods. The Pipe Lift's unique, wide scissor-grip design permits a secure lift – even if the pipe has been grasped off its balancing point. This eliminates the requirement to position a sling dead-center. The machine operator simply sets the tongs down onto the pipe and the legs automatically grab on tightly. They won't release until the pipe has been set back down firmly into position.

Custom Sizes and Solutions

Our largest Pipe Lift to date was designed to handle a huge 142 inch OD pipe. Kenco engineers can design a lifter to meet your specific job requirements.



Go with the Flow

A six million dollar project was implemented to install two 2.5 million gallon water tanks for the city of Meadville, PA. Twelve inch pipe dating back to the late 1880's as well as 20 inch pipe from the early 1900's had to be replaced. This operation was performed by W.D. Wright Contracting of Beaver Falls, Pennsylvania.

To ensure minimal impact to traffic flow, any work affecting road surfaces had to be accomplished quickly. After digging the ditches, Wright Contracting used a Kenco PL2750 Pipe Lift to handle the 1700 pound sections of 24 inch ductile iron. This lifting attachment has an automatic grip and release mechanism that allowed machine operators to maneuver the pipe from within the cab. The 16 foot lengths were positioned to enable the ground crew to connect the sections together. The ditches were then covered and the traffic lanes reopened. Using these methods, the project was completed on schedule and under budget.

Kenco Pipe Hook™

Designed for Trench Boxes and Confined Areas



- Reduce Your Pipe Handling time
- Increase production and profits
- One operator can lift, position, and set pipe sections together quickly and safely
- Self-leveling and slide balance models available
- The Pipe Hook can be used on any shape or type of pipe, even elliptical
- Reinforced box-style construction provides superior strength
- Full urethane pad coverage maximizes contact while preventing damage to pipe



"We have seen time improvements of 60% for a hook/set cycle. It provides us with a competitive edge."

Bowen Engineering Corporation - Pat Johnston, Seymour, IN



800-653-6069 kenco.com



Manual Slide Pipe Hook

Available in capacities of 9,000 to 60,000 pounds

- The Standard Pipe Hook can be used on any shape or type of 8 foot pipe sections.
- Custom sizes can be fabricated for pipe up to 20 feet in length.
- Slide balance model uses a movable lifting eye to obtain the desired balance point.

Self Leveling Pipe Hook

Available in capacities of 3,500 and 9,000 pounds

- The Self Leveling Pipe Hook can be used on any shape or type of 8 foot pipe sections.
- A specialized gas spring cylinder is housed inside the body which causes the pipe to level itself as it is raised up.



For use with
any Shape
of Pipe

PH60000

Weight <60,000lbs
(Min./Max. opening: 36" - any)

PH30000

Weight <30,000lbs
(Min./Max. opening: 30" - any)

PH18000

Weight <18,000lbs
(Min./Max. opening: 24" - 72")

PH12000

Weight <12,000lbs
(Min./Max. opening: 18" - 60")

PH9000

Weight <9,000lbs
(Min./Max. opening: 12" - 48")

PH3500

Weight <3,500lbs
(Min./Max. opening: 10" - 36")

Looking for a stable and safe way to lift and move Box Culverts?

Kenco Box Culvert wings are designed specifically for the job at hand.

Kenco box culvert wings are attached via a keyway system to each side of the pipe hook's main body. The mechanics of the lifting process remain the same for lifting RCP. The operator approaches the culvert from the side to insert the hook. The wings then help to stabilize and balance the culvert, ensuring that no tilting or twisting occurs during the lift process. Each lift happens in a single smooth motion with the set and release step occurring just as quickly.

Order these optional wings and increase capability of your Pipe Hook.

Kenco Multilift™ System

US PATENT NO: 10227217B2

Up to Eighty Eight Inches of Gripping Range



- Move objects such as concrete block, sidewalk pads or other precast items.
- This unique and versatile tool allows contractors to maneuver heavy objects up to 88 inches* wide.
- Fully adjustable legs can be positioned by sliding to the desired width.
- Pads can be placed on opposite sides to grab from the inside out.
- **NOTE:** Round ball pads are standard on all Multilift models. (see image on page 13) Other configurations available.
- *Maximum grip range of the 12000 pound capacity model

"We used the ML3K clamp to move and set granite from a WWII memorial in Worcester Massachusetts. This is one of the most versatile lifters I have ever used. Hands down the right tool for the job."

Jason Houle,
R. Bates & Sons, Inc.



800-653-6069 kenco.com

Standard Sizes

ML3K5T32V1	3000 pound capacity	5"-32" grip range
ML8K10T48V1	8000 pound capacity	10"-48" grip range
ML8K10T68V1	8000 pound capacity	10"-68" grip range
ML12K14T88V1	12000 pound capacity	14"-88" grip range

The Adjustable Lifting Grab

This automatic lifting grab allows contractors to maneuver various heavy objects quickly and efficiently within a designated range of up to eighty eight inches wide and up to 12000 pound capacities. The legs are fully adjustable and can be positioned just by flipping a lever and sliding them to the desired width. Specially engineered pad angle assemblies can be placed on opposing sides to allow the user the ability to grab concrete structures from the outside edges or from the inside out, as in the case of a culvert box type object.

Customization

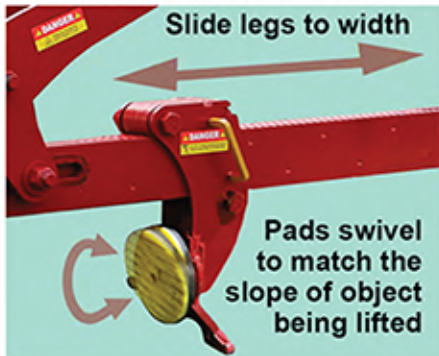
Converts easily to handle a wide variety of objects - including cylindrical shapes. Custom Grip ranges, pad assemblies and capacities are available for virtually any application.

Add extended legs and standoffs



below shows standard round pad

Slide legs to width



Pads swivel to match the slope of object being lifted

Customize the legs for different applications



Replace the feet to lift other materials



To Those Who Give It All

above: Bailey Granite of Flatwoods, KY has erected over 30 Gold Star Families Memorial Monuments across the US, including Hawaii. Each monument is comprised of four granite panels weighing up to 3000 pounds.

Setting each stone into place is no easy task. Bailey needed something able to lift, as well as securely grip, the smooth surfaces of each block. They found the Kenco Multilift with a grip range of 10 to 48 inches, non-slip pads and an 8000 pound capacity fit the requirements.

Bailey works with the Hershel 'Woody' Williams Medal of Honor Foundation to construct these exquisite monuments. Williams is the last surviving WWII Marine to be awarded the Congressional Medal of Honor. He's been spearheading these memorials since 2013 to honor the families of our fallen heroes.

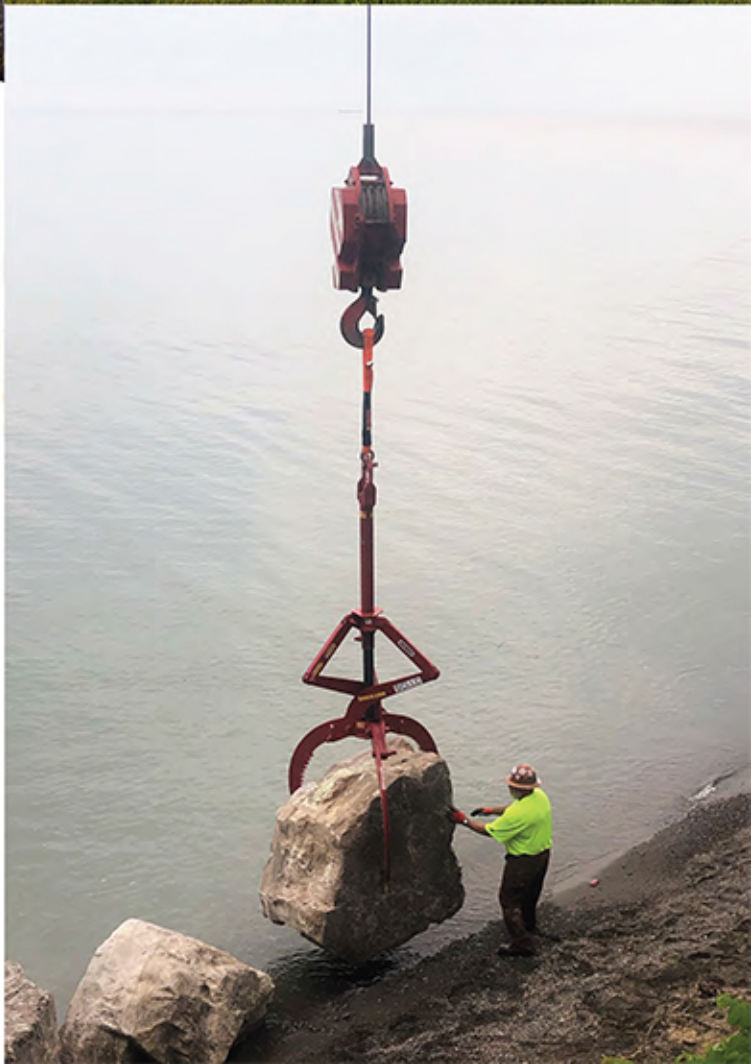


Kenco Rocklift™

Three Points of Contact to Safely Lift Irregular Shaped Objects



- Three points of contact to safely lift irregular shaped objects
- Just hook a strap to the lifting eye. Gripping action occurs automatically with each lifting cycle
- The actuator is housed inside the tube assembly for durability
- The Rocklift also excels at picking up brush and debris in hard to reach places such as deep ditches or ravines
- The unique, patented telescoping design of the lift mechanism allows for the release of the gripped object even when the tines are confined





With GripSmart® Technology

Release Gripped Objects Even
When the Tines are Trapped

KENCO

800-653-6069 kenco.com

Standard Sizes and Height Requirements

MG3000

3,000lb Capacity
Objects: 0" - 33"



MG6000

6,000lb Capacity
Objects: 0" - 49"



MG12000

12,000lb Capacity
Objects: 3" - 64.75"



above: Moving Rock at the Crazy Horse Monument

Black Hills, SD - Kenco is honored to play a small part in the carving of this monolithic sculpture, which was begun on June 3, 1948 by Korzak Ziolkowski. It is expected to take over a century to complete. The Kenco Rocklift has been in use since 2015 to remove the heavy fragments of granite as they are cut and blasted from the mountain.

left: See it in Action on Gold Rush/White Water

McKinley Creek, AK - When Discovery Channel's 'Dakota Fred' Hurt of Gold Rush fame was looking for a safe and effective way to move boulders from beneath the rushing water, he found the Rocklift to be the answer. On the show, Fred and his son, Dustin, suit up in diving gear to find pockets of gold that may be hidden ten feet below the surface of torrential water. The Rocklift is being used to remove any large boulders that prevent them from searching the creek bottom.

"This thing works great. The Graboid is picking up rocks we never thought it would grab. ... That's incredible!"

Dustin Hurt, Gold Rush White Water



Kenco Slab Lift™

The Industry's ONLY Horizontal Slab Lifter



- The Slab Lift has been developed for the removal of concrete slabs such as those found on suspended bridge decks that must be picked up from one side.
- Keeps the slab horizontal as it is lifted.
- Teeth clamp down as lifter is raised.
- Slide adjustment allows the operator to determine balance.

"It took fifteen seconds per panel for removal and placement. It literally cut seven eighths of the time out. What was to take six weeks took two and a half days."

Bianchi Demolition LLC Syracuse, New York





800-653-6069 kenco.com



Customized for Specific Project Requirements

Tampa, FL - Woodruff & Sons installed 7,300 linear feet of interconnections to the existing storm water system, with over 6,000 linear feet of storm water box culverts including double 8' x 8', as well as single 10' x 5' and 6' x 5' dimensions - all using this custom spreader beam designed to join two hooks as one unit.



Boardwalk Rebuild after Hurricane Sandy

November 10, 2012 brought devastation to the New York/New Jersey shores as Hurricane Sandy blew through leaving an estimated \$50 billion path of damage behind.

Rockaway Beach was a favorite summer destination for many but was left unrecognizable from the storm. The boardwalk was recently restored after more than three years of massive effort.

Trevcon was contracted by New York City to rebuild the boardwalks at Far Rockaway in Queens, NY. This colossal project involved rebuilding the entire 5.5-mile stretch, replacing the wood with concrete to make it more resilient against future storms.

Trevcon used dual Kenco Slab Lifts on a crane to assist in placing the huge concrete pads into position.

Kenco Superlift™ System

Wide Range Of Versatility In A Single Attachment

MOVE WALL, PIPE,
BLOCKS, DRUMS,
DEBRIS AND MORE
WITH THE SUPERLIFT'S
ASSORTMENT OF
INTERCHANGEABLE
TINES.

Instead of purchasing
an individual lifter for
different job
applications, this
one device has tines
that can be easily
changed from one set
to another.



Engineered with our exclusive
GripSmart Technology®



This innovative concept
is built into both the
Superlift and the Rocklift.
Our patented function
allows for the release of
a gripped object
*even when the
tines are trapped!*

More info on our website.



800-653-6069 kenco.com



The lineup of available Superlift® tines will let you move wall, pipe, blocks, drums, debris, and more with this one single attachment.

Specifications

The Superlift® is available in 6,000 or 12,000 pound capacity models, with larger custom sizes available.

One Superlift Body with Interchangeable Tines

No need to have one attachment dedicated to one certain type of job. Each tine can be detached just by removing a bolt, and a different tine can be put on. Our patented keystone design allows you to switch the attachment tines to fit the job.

Fully Automatic Operation

Our unique patented design enables a massive range of object types and sizes to be lifted, moved and released in confined spaces.

Tine attachments available for each Superlift model

Model	Barrier KL6T9	Log/Debris SM-LL DL	Log/Debris MED-LL DL	Log/Debris LG-LL DL	Pipe PL12T22	Pipe PL15T31.5	Pipe PL36T50	
SL6000	standard barrier wall 6"-9" top	Jaws open to 25"	Jaws open to 30"	Jaws open to 35"	Pipe OD 12"-22"	Pipe OD 15"-31.5"	Pipe OD 36"-50"	
SL12000	Barrier KL9T12	Log/Debris LL_DL	Pipe PL15T31.5	Pipe PL22T45.5	Pipe PL48T72	Block 24 inch	Block 36 inch	Block 42 inch
	standard barrier wall 9"-12" top	Jaws open to 42"	Pipe OD 15"-31.5"	Pipe OD 22"-45.5"	Pipe OD 48"-72"	Jaws open to 24"	Jaws open to 36"	Jaws open to 42"



Superlift at work with Allied Construction

Allied Construction of Logan, Utah was working in Pleasant Grove, Utah installing 36 and 42" PVC sewer main line. The photo is from the sewer interceptor project serving Timpanogas Special Service District. The depths were from 6 to 20 feet deep, with poor ground conditions and high ground water levels. The project consisted mainly of street installation, highway and railroad boring.

Custom Engineering

Use the power of your current machinery to lift anything

Kenco's team of engineers will take your lifting challenges and design a unique device to match your project's specifications.

Here are just a few examples of items we've provided based on our customer requests.

Tumbleweeds and Debris in the Desert



Kenco engineers were approached to find a viable solution to removing tumbleweeds and other odd shaped obstacles from deep crevices and ditches.

After researching the requirements, they designed the Triple Tine, a mechanical grapple

with three arms extending down that could grip irregular shapes. To allow the device to slip into narrow areas, the actuator was housed in the upper tube. This new design proved to be quite effective, and with some slight alterations, it evolved into our patented Rock Lift model and GripSmart® technology.

(See it on pp 16-17).

Call us, or fill out the Custom Lifter request form on our kenco.com web site to see what we can do for your next project.

A customer's need to lift 200 pound cylinders directly out of a crate resulted in the development of this tool. Our already proven Pipe Lift® was redesigned with streamlined

legs that allowed it to fit into the space between the crate walls and safely grip the 21 inch wide cylinders. The cylinder was picked out and hoisted into its desired location.



Required Lifting

The arduous task of lifting and moving heavy industrial pump housings was solved by this design. It has the same 'grip and release' action as our proven Barrier Lift and Pipe Lift

Handling OSB wall

This customer was looking for an easier way to move OSB wall sections into position for the modular wall construction process. Our engineers developed this lifter featuring pads with retracting pins that grip the wall securely without causing damage.





Conceptual Designs and Prototypes

KENCO

800-653-6069 kenco.com

With an overall vision to continually improve efficiency and time production for the industry, our engineers strive to anticipate those needs through initial conceptual designs and then advancing those ideas to the research and development phases. The images below are some products that are in different stages of this process.



DOLO Lifter
DOLO14K
CAT B/Svc 3
14,000 LB Capacity

**Adjustable Double Lifter
16K Spreader Beam**



LB16KACME32T114
Lifting Beam, 16K
16000 LB Capacity
CAT B/Svc CL 3



**Custom
Pipe Hook**
PH18KPG
18,000 LB Cap
CAT B/Svc 3



Ribbed Floor Slab Lifter
RFSL12
CAT B
12K



Windmill Turbine Lifter
WTL3K
CAT B/Svc 3
3,000 LB Cap



Split Slab Crab
to straddle girder beam
SP-SC42
CAT B/Svc 3



LIGONIER, PA 15658

WWW.KENCO.COM

THE INFORMATION PROVIDED WITHIN THIS
DRAWING IS THE PROPERTY OF KENCO CORP. ANY
REPRODUCTION, TRANSMITTAL, OR USAGE OF ANY

CAPACITY

RigMAX® Lifting

The easiest way to get your new Kenco lifting attachment operational

RigMAX®

This heavy duty rigging assembly includes one 3 foot polyester round sling and two alloy screw pin anchor shackles. It hooks up easily to the lifting eye on any Kenco Lifter. It can also be used for many other lifting operations in place of chains and straps.

- Large eye for easy choking applications
- Three foot length of flexible material
- Lightweight, yet incredibly strong
- Additional sleeve for added protection
- Tagged for rated capacity and certification
- Easy inspection: *webbing wear damage is indicated visually*



RigMax® Models

Model	Capacity	Length	Shackle Spec	Weight
KRM31700	31,700 lbs	3 feet	(2) 1-1/4" 18T WLL	24 lbs
KRM16800	16,000 lbs	3 feet	(2) 7/8" 9.5T WLL	10 lbs

The ideal solution for material handling and lifting applications in virtually any industry.



Excavator Attachments

Hardrock™ Buckets, Wedgebolt™ Couplers, Grapples and MORE!



HARDROCK™ BUCKETS



RIPPER



CONCRETE PULVERIZER



BRUSH GRAPPLE



WEDGEBOLT COUPLER



THUMB



DEMOLITION GRAPPLE

Only Kenco provides you the Hardrock™ series of Excavator Attachments

Buckets

Cleanup
Extreme Service
General Purpose
Ripper
Trapezoid
Twist-A-Bucket
V-Bottom

Brush Grapple

Brush/Debris Rake

Compaction Wheel

Concrete Pulverizer

Coupler

Demolition Grapple

Plate Compactor

Ripper

Thumb

Wedgebolt™ Coupler

Mechanical
Hydraulic

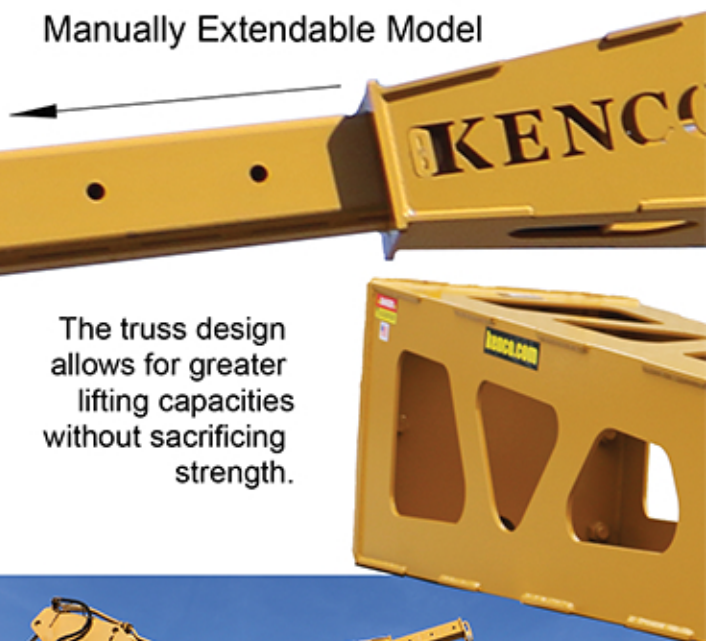
Call toll free 1-800-653-6069 to speak to our knowledgeable sales staff

Kenco Jib Boom

Extend the reach of your excavator or wheel loader.



Manually Extendable Model



The truss design allows for greater lifting capacities without sacrificing strength.



Get extra reach with your excavator or wheel loader without losing placement capability. Jib booms precisely handle and maneuver any load that can be attached to the chain hook on its tip.

- Increases your reach up to 15 additional feet (depending on model).
- Attaches horizontally to the excavator stick or wheel loader bucket attachment.
- Maintains clear line of vision during use.



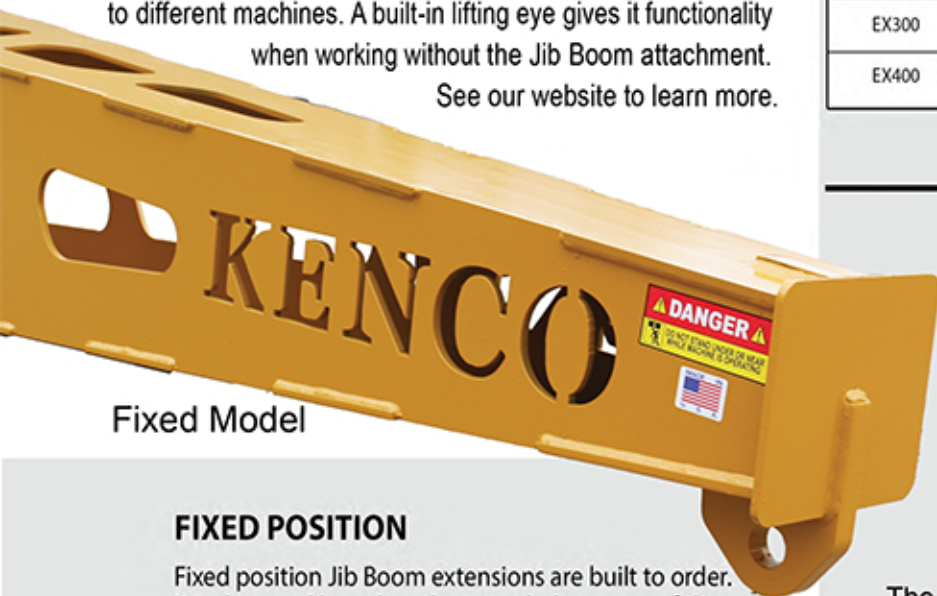


800-653-6069 kenco.com



Pin on UniLug™ system enables the Jib Boom to be affixed to different machines. A built-in lifting eye gives it functionality when working without the Jib Boom attachment.

See our website to learn more.



Fixed Model

FIXED POSITION

Fixed position Jib Boom extensions are built to order. It is designed based on the intended purpose of the attachment, whether that be farthest reach or heaviest load capacity achievable.

MACHINE SERIES	LENGTH OPTIONS	CAPACITY RATING
EX150	156 in Fixed	2500 lbs
	72 in Fixed	12000 lbs
EX200	180 in Fixed	2500 lbs
	72 in Fixed	16000 lbs
EX250	180 in Fixed	2500 lbs
	72 in Fixed	20000 lbs
EX300	180 in Fixed	6200 lbs
	72 in Fixed	24000 lbs
EX400	180 in Fixed	6200 lbs
	72 in Fixed	30000 lbs

The Uni-Lug System uses a standardized bolt hole pattern to make installation of the assembly hassle-free and permits switching the Jib Boom back and forth with different classes and brands of machines.

EXCAVATOR JIB BOOMS

MANUALLY EXTENDABLE

Manually Extendable Jib Booms are lengthened by removal of the hitch pin.

MACHINE SERIES	DESCRIPTION	CAPACITY RATING RANGE	JIB BOOM WEIGHT
EX200	84 in - 120 in Extendable	1,000 - 7,500 lbs	1420 lbs
EX250	84 in - 120 in Extendable	1,000 - 7,500 lbs	1535 lbs
EX300	84 in - 120 in Extendable	6,000 - 10,000 lbs	1610 lbs
EX400	84 in - 120 in Extendable	6,000 - 10,000 lbs	1860 lbs

Increase the length of your Jib Boom with this option!



The Jib Boom Extender bolts onto the Jib Boom using our Uni-Lug System to provide **even more reach!**

The Jib Boom and Extender are designed to use our exclusive **UNI-LUG SYSTEM**



Kenco Slab Crab®

Efficient Concrete Slab Removal. *The Original and Still the Best.*



- Remove bridge decks, airport runways, sidewalks and other surfaces that use poured concrete and other concrete slabs
- High-yield, abrasive-resistant alloy steels for exceptional durability
- Standard bucket widths available from 36" to 54"
- Models to handle slab thicknesses from 4" to 19"
- Standard models are available to fit 20,000 – 150,000 pound excavators and backhoes
- All Slab Crab® excavator buckets are available as direct pin, or use with pin grabbing or wedgestyle coupler



'It doesn't need to be perfectly aligned with the front of the slab in order for the new style to grip the slab sufficiently. Swank Construction in Wheeling, WV



800-653-6069 kenco.com

Standard Sizes

Model	Bucket Width	Slab Thickness
EX200	36"	4" to 12"
EX250	42"	4" to 12"
EX300	42" WIDE MOUTH	4" to 16"
EX300	48"	4" to 12"
EX400	54"	4" to 19"

Sizes exceeding 54" wide or 19" thick can be fabricated on request



NEW DESIGN

NEW! Serrated upper jaw ensures that slabs will not slip from the bucket

Just slide the teeth of the Slab Crab® under the pavement and lift it up. The slabs can be removed intact without disturbing the sub-base and loaded directly onto truck.



Scan this QR code to check out our **'Tips and Tricks Using the Kenco Slab Crab Bucket'** on Youtube



2 Nations, 2 Slab Crabs, 1 Great Success

At the US/Canadian border the team of Rankin Const. (CA) and Oak Grove Const. (US) used Kenco Slab Crabs to efficiently remove the existing surface of the Lewiston-Queenston Bridge in just eight days to set the pace for this resurfacing project.

For safety and efficiency, progress on both sides needed to occur at a similar pace. The 7" thick concrete was saw-cut into 6' x 10' pieces (over 350 per side.) The teeth of the Slab Crab® were slipped under the slab and the bond was broken. Each piece was tipped back to secure the load and lifted from the deck. This process continued at a rate of about six slabs per hour on both sides. By using this technique, the surface removal was completed in just eight days.

Kenco Slab Crab®

Efficient Concrete Slab Removal. *The Original and Still the Best.*



74 East Bridge Project in Ohio

Cincinnati - 'This project consisted of the removal of approximately 1400 slabs on seven bridges. Slabs ranged in size from 4'9" in width by 12 feet long, and were 13 inches thick. The U-shape in the back of the bucket worked great for prying slabs that hadn't been cut all the way through. Once the slab was seated in the bucket, it didn't move, slip, or wobble. The Slab Crab helped us dramatically cut production time.'

Curtis Siekman, Walsh Construction Group

EASY OPERATION



1. Sawcut deck into manageable pieces.



2. Slide the teeth under the slab.



3. Lift up on the slab to break it loose.



4. Stack the slab or place it right onto the truck.



800-653-6069 kenco.com



'Kiewit Infrastructure recently purchased two of the EX200 Class 36" Slab Crabs, and used them to remove the superstructure of a 920' long bridge in Trout Creek, Montana. The Slab Crab bucket allowed us to pull slabs of concrete off of the bridge quickly and efficiently, without allowing excessive rubble and debris to fall below the bridge deck.'

Julian Nizzoli, Engineer

Wheel Loader/Dozer



Loader/Dozer Attachments

800-653-6069

kenco.com

See the entire line of attachments we have to offer at Kenco.com



LOADER BUCKET



DOZER RAKE



MOLDBOARD RAKE



ROLL OUT BUCKET



DOZER BLADE



SNOW PLOW/PUSHER



MASTER HITCH



JIB BOOM

Not seeing what you're looking for? Call us today and ask one of our salespersons for assistance.

Buckets

Dozer
Grapple
Loader

Multi Purpose
Roll Out
Side Dump
Skeleton

Fork Carriage

Jib Boom

Master Hitch

Rakes

Brush/Debris
Grapple
Moldboard

Snow Plows

Blades
Pushers

Forklift Adapter

Modify any forklift to work with Kenco Lifting Products

Use our lifters to pick up objects with your forklift. Just slip the forks into this adapter and attach the provided safety retention chains from the bulkhead eye to the two top eyes of the adapter.

A lifting eye is positioned at a 24" load center to allow you to hook on our lifters.

Three standard models are available, or customize it to match your requirements.

Low Clearance model shown with Kenco Multilift attached

Standard model

MODEL	CAPACITY	WEIGHT
FLA12K	12,000 LBS	230 LBS
FLA20K	20,000 LBS	330 LBS
FLA8KU19 <i>Low Clearance</i>	8,000 LBS	260 LBS



Cross Functional UniLug™

Affix same attachments from your Skid Steer to your Excavator

Use skid steer attachments on your excavator.
The Kenco **UniLug™ System** is available with a universal skid steer coupling component.



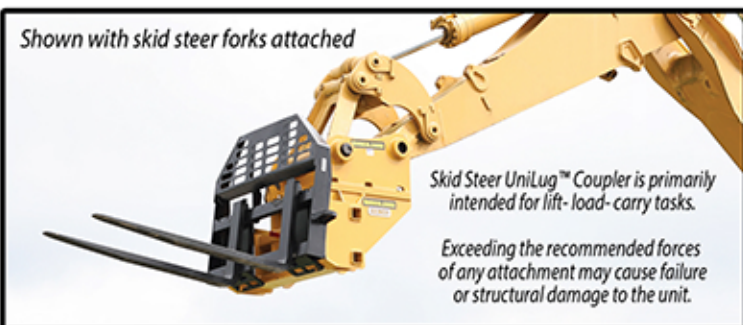
(above) **Lug Component** (not included)
See other UniLug™ assembly elements on page 27



The Skid Steer Coupling Component adjoins typical skid steer attachments to excavators without needing to make modifications.



Shown with skid steer auger attached



Shown with skid steer forks attached

Skid Steer UniLug™ Coupler is primarily intended for lift-load-carry tasks.

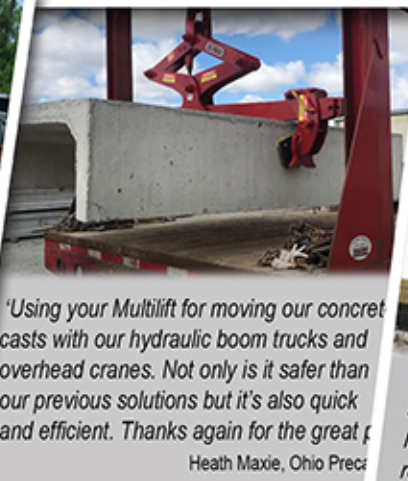
Exceeding the recommended forces of any attachment may cause failure or structural damage to the unit.

Increase your machine capabilities with this UniLug™ System

Lug Component	Designed to match your particular machine's specifications
Skid Steer Coupling Component	Allows skid steer attachments to be used on excavators and wheel loaders

Our Customers Say it Best

Photos and comments - straight from the people who use our products







170 State Route 271
Ligonier, PA 15658

PSRT STD
U.S. POSTAGE
PAID
GREENSBURG, PA
PERMIT NO. 88

EXPECT MORE

out of your machine.



    Visit Kenco Lifting Products

800-653-6069