

KL30K6T12V4

6" TO 12" GRIP RANGE

30,000 POUND MAXIMUM CAPACITY

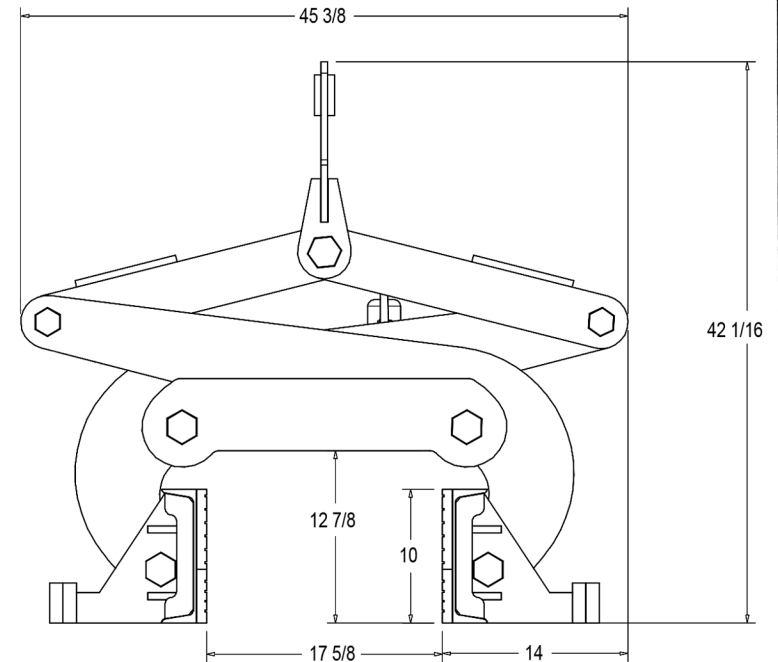
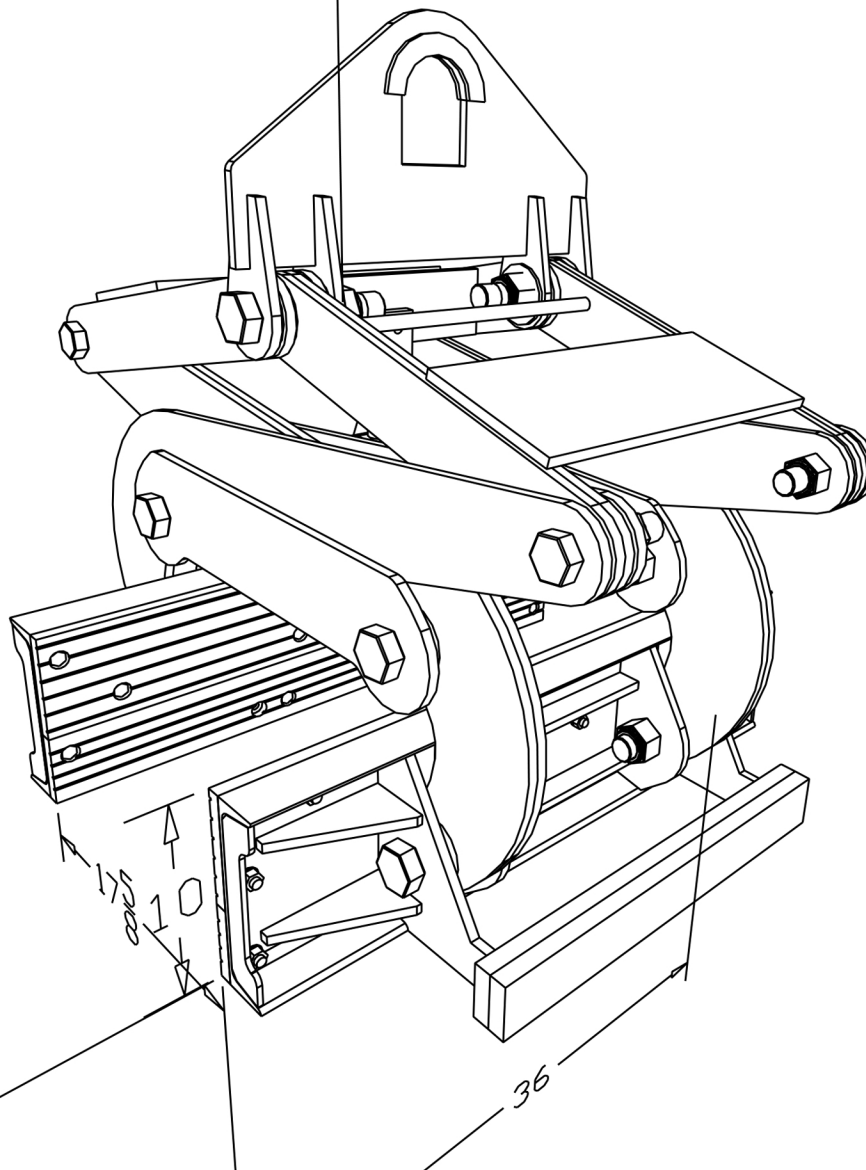
UNIT WEIGHT - 1050 POUNDS

AUTOMATIC LATCHING MECHANISM: ACTUATOR, LG

ELASTOMER PADS: (2) 6 X 36 (2) 4 x 36

42 $\frac{1}{16}$

45 $\frac{3}{8}$



DRAWN BY:

N/A

DATE:

N/A



KENCO CORP.
170 STATE ROUTE 271
LIGONIER PA 15658

(800)653-6069

WWW.KENCO.COM

THE INFORMATION PROVIDED WITHIN THIS
DRAWING IS THE PROPERTY OF KENCO CORP. ANY
REPRODUCTION, TRANSMITTAL, OR USAGE OF ANY
KIND IS PROHIBITED WITHOUT WRITTEN PERMISSION.

WEIGHT

1050 lbs

CAPACITY

DESCRIPTION

KL30K6T12V4
KENCO BARRIER LIFT
30,000 POUND CAPACITY
GENERAL DIMENSIONS

PART NO.

N/A

REVISION