

# INCREDIBLE ATTACHMENTS



877-4-ATTACH  
877-428-8224  
[www.kenco.com](http://www.kenco.com)

safety





## OUR FOCUS IS ON PERFORMANCE AND PRODUCTIVITY

The key goal of every attachment we design is to increase the versatility and efficiency of your primary operating equipment. Kenco has successfully responded to customer requests with the manufacture of need-specific Rock Solid Attachment Solutions since 1984.

Our engineering team has developed dozens of incredible attachment designs, many of which have become standard inventory items.



**877-4-ATTACH**  
**877-428-8224**  
**www.kenco.com**

# TURN YOUR EXCAVATOR INTO A PRODUCTIVE AND PROFITABLE MULTI-TASKING MACHINE

**Kenco provides  
advanced design,  
Rock Solid  
construction and  
prompt delivery.**

Kenco furnishes attachments for excavators ranging from mini to 200,000 pounds, wheel loaders from 1.0 to 40 yards, as well as dozers, backhoes, skid steer, and forklift machines.

All attachments and lifting devices are designed and fabricated to meet or exceed applicable ANSI, ASME and SAE standards.

**YOUR DEMANDS  
DRIVE OUR  
BUSINESS**

Ongoing research and development is based on customer demands to make the job site more efficient and productive.

**PROMPT  
TURNAROUND -  
INCLUDING CUSTOM  
PROJECTS**

We maintain inventory of our most popular items, available for immediate shipment.

Most custom adaptations can be engineered, constructed and delivered within 2 - 3 weeks.

## THE PROOF OF QUALITY IS IN THE PERFORMANCE

There is no denying; Kenco attachments are engineered and more ruggedly constructed to perform in the most extreme environments.

*We guarantee it!*

Visit us at:  
[www.kenco.com](http://www.kenco.com)

# CONTENTS

## LIFTING ATTACHMENTS

<b>BARRIER LIFT</b>	Move concrete jersey wall faster and more efficiently.....	4
<b>PIPE LIFT™</b>	Handle pipe safely and easily.....	6
<b>PIPE HOOK</b>	Lift, place, and set any type or shape of pipe.....	8
<b>MULTILIFT</b>	Legs adjust to pick up a wide range of precast objects.....	10
<b>ROCKLIFT</b>	Three points of contact to grab irregular objects safely.....	12
<b>SLAB LIFT</b>	Lifts and keeps slabs in a horizontal position.....	14
<b>SUPERLIFT® SYSTEM</b>	Interchangeable tines .....	16
<b>CUSTOM ENGINEERED</b>	Attachments designed for specific needs.....	18
<b>RIGMAX®</b>	Sling assemblies for hooking up to the lifting eye.....	20

## EXCAVATING ATTACHMENTS

<b>SLAB CRAB®</b>	Remove bridge decks and other concrete slabs.....	22
<b>WEDGEBOLT™ COUPLER SYSTEM</b>	Hydraulic or mech models.....	24
<b>HARDROCK™ BUCKETS</b>	Standard or Special Purpose style buckets...	26
<b>HARDROCK™ THUMBS</b>	Pick up objects with complete control.....	28
<b>HARDROCK™ GRAPPLES</b>	Built to handle the toughest conditions.....	30
<b>SLASH BLADE®</b>	Scoops more material than a regular bucket.....	32
<b>SPECIAL PURPOSE</b>	Rippers, compactors, concrete pulverizers.....	34

## LOADER/DOZER/FORKLIFT

<b>BUCKETS</b>	Light material, high capacity, and extreme service buckets.....	36
<b>ACCESSORIES</b>	Increase production and purpose of your machine.....	38

**KENCO has the  
widest selection of  
incredible attachments  
in the  
construction industry**





## BARRIER LIFT

This attachment cuts required time needed to move barrier wall so significantly, you'll never want to do the job again without one.

### Features:

- Rugged, built -to- last construction
- Full surface contact without damage to the wall
- Wide 6 inch grip range
- Large elastomer pads provide a superior grip
- Totally automatic operation - grabs as it is set down on the wall, and it will not release until the wall has been set back down into position.

# DOTS use the Barrier Lift to move wall in all 50 states

[www.kenco.com](http://www.kenco.com)



## MOVE CONCRETE BLOCK, CAPSTONE, CURBING, JERSEY BARRIER WALL, GRANITE OR MARBLE MONUMENT STONE

Just set it down onto the wall top to activate the lifter. Swiveling pad angles adjust to match the slope of the wall. Lift and move the wall position. Once the wall has been set firmly back on the ground, it automatically releases. The action continues with each cycle.

### CAPSTONE LIFTER

24" - 26" range/ 1200 cap



### CURB LIFTER

3" - 12" range/ 1500 cap



### MONUMENT LIFTER

3" - 12" range/ 1500 cap



### ECOBLOCK LIFTER

24" - 30" block/ 6000 cap



### KL9000

#### BARRIER LIFT

6" - 12" range/ 9000 cap



### KL12000

#### BARRIER LIFT

6" - 12" range/ 12000 cap



### KL16000

#### BARRIER LIFT

6" - 12" range/ 16000 cap



### KL30000

#### BARRIER LIFT

6" - 12" range/ 30000 cap



### KL40000

#### BARRIER LIFT

6" - 12" range/ 40000 cap



### KL12000

#### TEXAS LOW PROFILE BARRIER LIFT

Grips 28" wall/12000 cap



### NOW YOU CAN LIFT TWO AT A TIME WITH OUR

#### DOUBLE BARRIER LIFTER!

*Click the pic to see it work!*

Move **TWO WALL** at a time !



*Custom specifications can be easily achieved.*



Optional Alignment Legs

### Reviews



"loading time of barrier wall has been cut by more than half "...  
O'Shea Lumber Company , Glen Rock, PA





## PIPE LIFT™

This attachment is the safest and easiest way to lift and move pipe. It can be used with concrete, PVC, DI, or steel.

### Features:

- No addition to hydraulics necessary to operate
- Narrow profile allows for easy removal from tight trenches
- Unique, wide scissor lift ensures a safe grip, even if pipe is picked off center position.
- Each lifter will pick up several different pipe diameters

**There isn't a safer, easier way to move heavy pipe**

[www.kenco.com](http://www.kenco.com)

## FULLY AUTOMATIC OPERATION

Double your production output versus the sling and chain methods. The Pipe Lift's unique, wide scissor-grip design permits a secure lift – even if the pipe has been grasped off its balancing point. This eliminates the requirement to position a sling dead-center. The machine operator simply sets the tongs down onto the pipe and the legs automatically grab on tightly. They won't release until the pipe has been set back down firmly into position.

## STANDARD MODELS are available

to handle from 4" to 58" pipe



## or CUSTOMIZE TO SPECS

Our largest Pipe Lift to date was designed to handle a huge 142 inch OD pipe.

Kenco engineers can design a lifter to meet your specific job requirements, too. Contact them today toll free 1-800-653-6069.

### Reviews



*" Compared to how we used to move pipe with straps and cable, the Pipe Lift is much safer, saves alot of time, and increases productivity. "*  
Immel Excavating , Greenville, WI







## PIPE HOOK

One operator can lift, position, and set pipe sections together quickly and safely.

The slide balance model uses a moveable lifting eye to obtain the balance point.

Self-leveling models have a built-in cylinder that automatically adjusts to the weight of the pipe and achieves the proper balance point.

The Pipe Hook can be used on any shape or type of pipe, even elliptical.

[www.kenco.com](http://www.kenco.com)

# Designed for Trench Boxes and Confined Areas



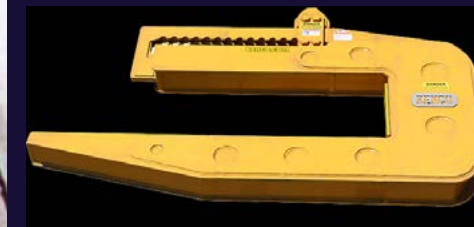
**TWO MODELS AVAILABLE**

← **MANUAL SLIDE** or  
↓ **SELF LEVELING**



The Pipe Hook can be used on any shape or type of 8 foot pipe sections.

**Two unique Pipe Hook models to choose from:**



The manual slide model of the Pipe Hook is available in capacities from 9000 to 60,000 pounds.



The self balancing model of the Pipe Hook is available in capacities of 3500 and 9000 pounds.

You can also get a Pipe Hook with **CULVERT WINGS** to lift box shapes. Click the picture for video.

**Custom sizes can be fabricated for pipe up to 20 feet in length.**

### Reviews



"We installed 84 inch – 25,000 pound elliptical pipe in record time... time improvements of 60% for a hook/set cycle." Phoenix Construction, Panama City, FL







## MULTILIFT

Move slabs such as concrete block, sidewalk pads or other precast items. This unique and versatile tool allows contractors to maneuver heavy objects up to 68 inches wide.

### FEATURES:

- Fully adjustable legs can be positioned by sliding to the desired width.
- Pads can be placed on opposite sides to grab from the inside out.

[www.kenco.com](http://www.kenco.com)

SIXTY EIGHT  
INCHES OF  
GRIPPING  
RANGE



## THE ADJUSTABLE LIFTING GRAB

This automatic lifting grab allows contractors to maneuver various heavy objects quickly and efficiently within a designated range of up to sixty eight inches wide and up to 8000 pound capacities. The legs are fully adjustable and can be positioned just by flipping a lever and sliding them to the desired width. Specially engineered pad angle assemblies can be placed on opposing sides to allow the user the ability to grab concrete structures from the outside edges or from the inside out, as in the case of a culvert box type object.

**3000 pound capacity**  
has a 5 -32 inch leg adjustment



**8000 pound capacity**  
available in three models:

- 3 -15 inch leg adjustment
- 10 - 48 inch leg adjustment
- 10 - 68 inch leg adjustment



Custom Grip ranges, pad assemblies and capacities are available for virtually any application.

### Reviews



*"When using the Multilift, we removed panels without any laborers, just a machine operator and excavator. It took fifteen seconds per panel for removal and placement. This calculated out to be an enormous time saver. It literally cut seven eighths of the time out. What was to take six weeks took two and a half days."*  
Bianchi Construction, Syracuse, NY



Converts easily to handle a wide variety of objects - including cylindrical shapes







## ROCKLIFT

The Rocklift excels at picking up brush and debris, especially in hard to reach places such as deep ditches or ravines.

Just hook a strap to the lifting eye. Gripping action occurs automatically with each lifting cycle. The actuator is housed inside the tube assembly for durability.

### FEATURES:

- Three points of contact to safely lift irregular shaped objects
- The actuator is housed inside the tube assembly for durability.

[www.kenco.com](http://www.kenco.com)

# THREE POINTS OF CONTACT

## LIFT IRREGULAR SHAPES



Three points of contact will handle those odd and irregular shaped objects such as rock boulders and field stone.



**MG3000** 3000 lb capacity

The tines have a grip range of up to 30 inches.

Collapsed, it stands 50 inches high to the lifting eye, which attaches to any machine with lifting capabilities with just a shackle. Extended, it is about 70 inches high.

**MG12000** 12000 lb capacity

The tines have a grip range of 24 to 60 inches.

Collapsed, it stands 127 inches high to the lifting eye, which attaches to any machine with lifting capabilities with just a shackle. Extended, it stands about 151 inches high.



**MG6000** 6000 lb capacity

The tines have a grip range of 15 to 40 inches.

Collapsed, it stands 67 inches high to the lifting eye, which attaches to any machine with lifting capabilities with just a shackle. Extended, it stands about 98 inches high.







## SLAB LIFT

Designed to lift concrete slabs in a horizontal position, the Slab Lift is built to meet the required specifications for the project that it is to be used with.

### FEATURES:

- Grips tightly as it lifts
- Keeps the slab horizontal as it is raised
- Slide adjustment allows the operator to determine balance

[www.kenco.com](http://www.kenco.com)

## The Industry's ONLY Horizontal Slab Lifter



### The grip tightens as the slab is lifted.

The Slab Lift has been developed for the removal of concrete slabs such as those found on suspended bridge decks that must be picked up from one side.



### RATCHETING TEETH BITE DOWN INTO THE SLAB AS IT IS LIFTED TO KEEP SLABS HORIZONTAL FOR LOADING/STACKING OPERATIONS

Typical specifications are determined for concrete measuring 4 to 6 inches in thickness; and about six feet in width. The total weight capacity of the slab may not exceed 9000 pounds. A sliding lift eye is manually positioned to pick the center of gravity for the slab being lifted.

← Bianchi Construction of Syracuse, NY is seen on left using the Slab Lift.

Superior Construction, based in Jacksonville, Florida is pictured right and below using dual Slab Lifts.







## SUPERLIFT SYSTEM®

Move wall, pipe, blocks, drums, debris, and more with the Superlift's® assortment of tines. This unique tool has been designed to integrate versatility into one single attachment so that it could be used to handle a wide range of different shapes and sizes of objects.

### FEATURES:

- Tines can be interchanged to match differing job needs.
- Massive grip range
- Objects can be released in confined spaces



# CHANGE TINES TO PERFORM DIFFERENT LIFTING OPERATIONS

[www.kenco.com](http://www.kenco.com)

**UNIQUE PATENTED DESIGN**, with a main body that is separate from the tines. Tines can be interchanged to match differing job needs.



The lineup of available Superlift® tines will let you move wall, pipe, blocks, drums, debris, and more with this one single attachment. Purchase just the Superlift® body as pictured left, and configure it to become the attachment you need for the job.



with log tines



with pipe tines



with wall tines



**The Superlift® is available in 6,000 or 12,000 pound capacity models, with larger custom sizes available.**



Ready for any job



Change tines quickly

*No need to have one attachment dedicated to one certain type of job. Each tine can be detached just by removing a bolt, and a different tine can be put on. Our patented keystone design allows you to switch the attachment tines to fit the job.*

below: Allied Construction (Utah) is using the Kenco SL6000 Superlift® on a job site.







## CUSTOM ENGINEERING

Why struggle with potentially dangerous, inefficient, make-shift rigging of chains, cables, or hooks when you can have Kenco develop a custom lifting device?

Kenco engineers have over 30 years of experience to solve all sorts of custom lifting challenges.

Whatever you are required to lift, Kenco engineers will assess the situation, design a solution, and provide operable pricing and fabrication timelines.

Contact our engineers today to discuss your specific lifting requirements at:  
**1-800-653-6069**

**www.kenco.com**

## SIMPLE SOLUTIONS TO YOUR LIFTING NEEDS

The lifting device pictured above was developed based on a company's request to lift 200 pound cylinders directly out of a crate. The solution, similar to our Pipe Lift™, allowed the streamlined legs to fit down inside the crate to grab the 21 inch width of the cylinder securely.

Research and development, as well as the manufacturing facilities of Kenco Lifting Attachments, is located and performed in southwestern Pennsylvania.

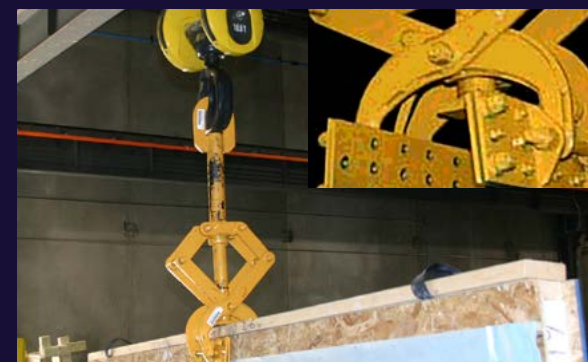


Practical solutions for impractical situations

A sample of custom applications designed and brought to life by our Kenco engineering team in response to customer requests

### PROVIDING VIABLE SOLUTIONS

The OSB Lifter (right) incorporates pins that retract behind the outer plate (see inset) when pressure is released. This allows it to maneuver the wall without damaging it, and ensures a grip that won't allow slipping when it is lifted.



### Move TWO WALL at a time !



above: A definite game changer, this new version of the Barrier Lift has been re-engineered to grab two sections of Jersey wall at a time. Contact Kenco today to find out more about the Dual Lifter.



above: A precast box lifter



above: A crate lifter



left: This unique single arm lifter was developed in response to a customer who needed a lifter capable of handling 600 pound capacity – 48 inch wide monument blocks - that had an extreme slope on one side.

### MORE CONCEPTS IN THE WORKS



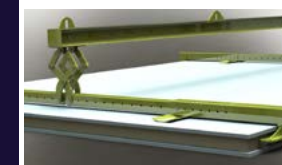
Triple block lifter



Crystal lifter



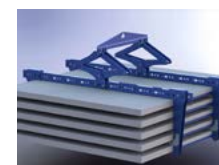
Dolo lifter



Custom wall lifter



Ribbed concrete lifter



Multi stack lifter



above: A custom barrier lifter





## RigMAX®

The ideal solution for material handling and lifting applications in virtually any industry.

**RigMAX** contains everything needed to attach any of our lifters to any machine. It includes one 3 foot length of eye & eye round sling and two alloy screw pin anchor shackles.

### FEATURES:

- Large eye for easy choking applications
- Highly flexible
- Lightweight
- Incredible strength
- Easy inspection: webbing wear damage will be indicated visually

[www.kenco.com](http://www.kenco.com)

# THE EASIEST WAY TO GET YOUR NEW KENCO LIFTING ATTACHMENT OPERATIONAL

## RigMAX set consists of:

- One 3 foot length of eye & eye round sling →
- Two alloy screw pin anchor shackles →

## Available in two capacities



The **KRM16800** is a 16,800 pound capacity orange colored sling with two 3/8 inch shackles and weighs only 10 pounds



The **KRM 31700** is a 31,700 pound capacity silver colored sling with two 1 1/4 inch shackles and weighs just 24 pounds



← “WEAR-EVER” double cover sleeve extends the life of the sling.

← “Endless loop” multiCore polyester fiber provides incredible strength and flexibility.







## SLAB CRAB®

The solution for the removal of concrete slabs. Ranging in widths of 24 " to 60 ". Slab Crab models can process slabs up to 20" thick and are available to fit 20,000 to 150,000 pound excavators as well as backhoes and skid steer machines.

### FEATURES:

- High-yield, abrasive-resistant alloy steels for exceptional durability
- Model widths from 24" to 60"
- Models to handle slab thicknesses from 4" to 20"

[www.kenco.com](http://www.kenco.com)

# THE REMOVAL OF CONCRETE SLABS AND BRIDGE DECKS IS A ONE MAN JOB!



**Remove bridge decks, airport runways, sidewalks and other surfaces that use poured concrete slabs.**

Just slide the teeth of the Slab Crab under the pavement and lift it up. The slabs can be removed intact and loaded directly on a waiting truck.



**Slab Crab models are available in these standard sizes**

EXC	BKT Width	SLAB Thickness
EX200	36"	4-12"
EX250	42"	4-12"
EX300	48"	4-12"
EX400	54"	4-19"

Sizes exceeding 54" wide or 20" thick can be fabricated on request.



The concrete pavement is simply saw cut into manageable pieces. Size of each slab depends on the lifting capability of the machine that the Slab Crab is being used on. Once the pavement has been cut, the slab removal process quickly becomes a one man job.

**SLABS SEAT SECURELY IN THE BUCKET FOR EASY REMOVAL**



### Reviews



"We pull over 100 slabs a day with the Slab Crab..."  
The Ruhlin Company, Sharon Center, OH

Kenco Slab Crab shells are in stock and lugged according to the customer's desired specs upon receipt of order, allowing a quick purchase turnaround time.





## WEDGEBOLT™ COUPLER SYSTEM

Excavators are designed to dig based on a specific bucket curl or rotation. Pin grabbing couplers create a space between the end of the stick and the bucket. This space can be as much as 8 to 13 inches. This results in a loss of digging power by as much as 25%! The larger the machine, the greater the loss in breakout force.

### FEATURES:

- Maintains the machine's digging power
- Eliminates pounding pins
- Allows fast, effective attachment changes
- Available in mechanical and hydraulic models.

[www.kenco.com](http://www.kenco.com)

## ELIMINATES POUNDING PINS



## SEE HOW SIMPLE IT CAN BE TO CHANGE ATTACHMENTS

With our mechanical models, the operator simply removes two bolts and a wedge bar, switches attachments, and re-inserts the bolts. No fuss. The Positive-Locking Action prevents movement of the attachments. The entire procedure takes less than five minutes.



### MODELS TO FIT:

EX120  
EX150  
EX200  
EX250  
EX300  
EX400



A single bolt Wedgebolt Coupler is made for less than 120 Class mini excavators.

### Hydraulic Wedgebolt Coupler

A reinforced frame combined with sleek engineered design provide increased lifting capacity. The integrated lifting eye allows the operator a means to hook up a shackle to lift loads directly from the coupler, without adding additional attachment weight.



The triple tiered safety lock system provides a dependable positive locking to prevent accidental disengagement of the attachment. A large high pressure release cylinder performs reliably in the engagement and disengagement of attachments. Audible and visual warnings are displayed in the operator cab whenever wedge bar is disengaged.

The hydraulic versions can be used with attachments in the same weight class designed for manual couplers.

### Reviews



“Everytime I rolled my pin-grabber back, it would hit the curl cylinder. I removed my pin-grabber and put a WedgeBolt on the end of my Gehl 503Z. What a difference! It made it feel and act like a totally different machine. It gave me noticeably more digging power, plus it lightened up my front end.”  
Bobby Ramsey, Ramsey Excavating, Laughlintown, PA







## HARDROCK™ BUCKETS

Kenco offers virtually any size and type of heavy duty bucket for every digging requirement.

All buckets are available as a direct pin-on or to accept a Wedgebolt Coupler™

### FEATURES:

- Double Sidewall Construction
- AR 400 steel construction
- Choice of teeth: ESCO, CAT, Hensley
- Tapered Design (won't stick in the trench)
- Deeper profile offers extra capacity
- Incorporated lifting eye
- Drilled for side cutters

[www.kenco.com](http://www.kenco.com)

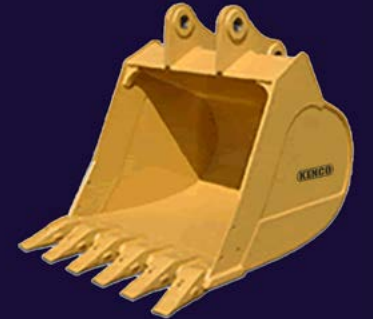
# THE TOUGHEST BUCKET IN THE INDUSTRY



## BUILT STRONGER THAN MOST OTHER “EXTREME DUTY” BUCKETS!

### EXTREME SERVICE BUCKET

Features T-1 steel liner, two-piece side plates, hard surfacing, and abrasion-resistant cutting edge. Available in sizes from 36 to 60 inches width and of 7/8 to 4.0 cubic yard.



### CLEANUP BUCKET

Open design for easy cleanout, cutting edge is drilled for bolt-on edge. Available in sizes from 48 to 96 inches width and of 7/8 to 5 7/8 cubic yards.



### TRAPEZOIDAL BUCKET

Constructed with a heavy duty construction and available in drop center configurations. Custom builds are available. Available in sizes from 18X60 to 42X84 inches.



### V BOTTOM BUCKET

The V shaped design gives this bucket unprecedented penetration to dig through frost, shale, or rock. Heat treated alloy construction gives superior strength and wear in the roughest of conditions.



### RIPPER BUCKET

With claw-like replaceable teeth to break up the lower layers.

### Reviews



*“ bucket works ten hours a day in concrete, and it's holding up great...”*  
J.D. Posillico – Farmingdale, NY







## HARDROCK™ THUMBS

This is the essential tool for demolition, land clearing, and all picking operations. Increase your versatility and production, and get it done with one machine. Kenco HardRock™ thumbs are built tough to stand up to the most severe demolition conditions.

### FEATURES:

- AR 400 steel for greater durability
- Line-bored pin bosses to provide accurate pin alignment and reduced torsional stress
- Case-hardened pins

[www.kenco.com](http://www.kenco.com)

# BUILT TOUGH TO STAND UP TO THE MOST SEVERE DEMOLITION CONDITIONS



**PICK UP AND PLACE OBJECTS WITH TOTAL CONTROL.**



The design of the Hardrock Thumb allows it to be stored flat against the stick and out of the way whenever the machine is being used for digging purposes or other such operations.



### THUMB WIDTHS AVAILABLE

(dependent on the size of machine)

8 inch  
12 inch  
18 inch  
24 inch  
32 inch  
34 inch  
36 inch

AVAILABLE IN BOTH  
WELD ON MECHANICAL  
AND  
HYDRAULIC MODELS.

A Thumb greatly increases  
the versatility that you expect  
out of your excavator



Kenco also offers a Direct Mount Hydraulic Thumb model. Pricing and availability on request.

### Reviews



"We've eliminated the use of one man and one machine since purchasing the thumb. We use it often in demolition, stumps, loading scrub brush. We rate the HardRock Thumb a 10. It has significantly increased production."  
John Buzzell, R.L. Buzzell, Inc., Merrimac, MA







## HARDROCK™ GRAPPLES

Kenco extreme duty demolition grapples are designed and constructed to provide years of service – in the toughest conditions. Only Kenco builds a grapple that maintains proper curl when working with a coupler.

### FEATURES:

- Standard 2 over 3 tine configuration
- Replaceable tips extend production life
- Custom configurations are available

[www.kenco.com](http://www.kenco.com)

**GRAB AND LOAD ANY  
MATERIAL! HANDLE THE  
TOUGHEST DEMOLITION  
PROJECTS!**



## BUILT TO HANDLE THE MOST EXTREME PROJECTS.

### Demolition Grapples

are built for mounting on these machine sizes:

- EX150 Series
- EX200 Series
- EX250 Series
- EX300 Series
- EX400 Series
- EX500 Series



← **Kenco Hardrock™ Grapples** are designed for use in the harshest environments - built to handle brush, rocks, and other demolition types of debris.

*Demolition grapples are not designed for operations requiring digging or prying.*



### Kenco Brush Grapples →

Brush Grapples are an excellent tool that's been specifically designed for the most rugged duty in land clearing applications. The dual clamp design allows for handling of uneven loads. The Kenco Brush Grapple is available in 3 over 4 tine, 4 over 5 tine, etc. configurations. Number of tines will vary according to size of machine it is being used on.



### Reviews



"The HardRock Grapple works great for our highway demolition jobs."  
D'Annunzio & Sons, South Plainfield, NJ

**Kenco Grapples** are available as direct pin-on, pin grabber or Wedgebolt Coupler mount for easy attachment changes





## SLASH BLADE®

Kenco's Slash Blade is one of the most unique attachments in the industry. It allows your machine to cut like a dozer, scrape like a grader, dig like a bucket, PLUS, it performs like a grapple when used with a thumb.

### FEATURES:

- Two versions available: rigid or hydraulic tilt.
- Radius allows blade to roll when grading dirt.
- Replaceable cutting edge prevents unnecessary moldboard wear.

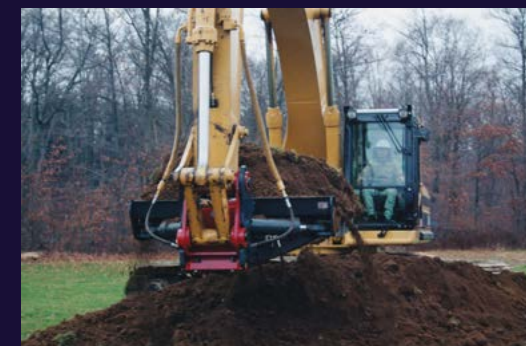
# DESTINED TO BE THE MOST VERSATILE TOOL IN YOUR ATTACHMENT INVENTORY

[www.kenco.com](http://www.kenco.com)



## MOVE 50% MORE MATERIAL

THE SLASH BLADE® CUTS LIKE A DOZER, SCRAPES LIKE A GRADER, AND DIGS LIKE A BUCKET, plus it will work like a grapple if a thumb is attached.



## THE SLASH BLADE® TILTS RIGHT AND LEFT UP TO 45°



### Reviews



"We outfitted our Hitachi EX550 with a Kenco Slash Blade and it outperformed and out dug anything we've tried in the past. We significantly increased our production versus a standard bucket."  
Brice Inc., Fairbanks, AK

This attachment's unique design is excellent for handling sticky material because it cleans itself with every pass. The sloppier and stickier the material, the more effective the Slash Blade performs.





## SPECIAL PURPOSE

Kenco attachments will turn your excavator into a virtual 'Do-it-all' machine.

It's no longer just a machine exclusively for digging.

By switching attachments, a wide variety of jobs can be performed...

things like lifting different objects and materials, or breaking through hard surfaces, chewing up old concrete, compacting soil, or grading and excavating.

By adding a few attachments to your arsenal of tools, you'll be guaranteed to increase your productivity and time expectations.

[www.kenco.com](http://www.kenco.com)



## THE KENCO RIPPER

The Ripper cuts quickly through rock, shale, and permafrost... it makes digging in hard soil easier and more productive. By directing the entire force of the excavator to one point, the Ripper is the perfect attachment to cut through any hard terrain that is encountered in your work environment. If the soil conditions are less than desirable, a Kenco Ripper will give that extra mechanical advantage to shatter through the upper crust.

## THE KENCO CONCRETE PULVERIZER

Built for the controlled demolition of concrete, the Pulverizer uses the excavator's bucket cylinder actuates the moveable front jaw and crushes material against the stationary back jaw. An ideal tool for separating concrete from rebar! Crush concrete easily. The force of the jaws crunches up the concrete and cleans it off the rebar, allowing for easy separation from the rest of the rubble.



## THE KENCO ROTARY COMPACTION WHEEL

The Kenco Rotary Compaction Wheel uses your machine's power for soil compaction. Available in Wedge pad or Sheepfoot tines. Sizes from 4" to 60" widths. A sealed bearing design protects against abrasive damage. Kenco Compaction Wheels come with a removable mount with pins and a soil leveling plate.

Special orders and custom compaction wheels are also available.



## THE KENCO PLATE COMPACTOR

A vibrating Kenco Plate Compactor is the ideal tool for soil compaction in trenches, foundations, or slope applications.

Its heavy-duty design offers plenty of strength for driving wood, steel sheeting, posts, and beams.

Available in models to fit from one ton to 45 ton excavators.



## BRUSH and DEBRIS RAKES

Kenco Brush and Debris Rakes are ideal for land clearing, gathering demolition debris, or sorting material. They are constructed of high strength, wear resistant steel. A steel tube and two skins are built into the design for added strength.

These rakes are available in sizes to fit excavators, backhoe, and mini excavators.





## LOADER/ DOZER BUCKETS

Kenco has the attachments you need to give your wheel loader or dozer machine the added capability to handle a wide range of tough jobs.

Buckets range from light material handling to high capacity, general purpose or extreme service needs.

### FEATURES:

- Buckets are built Kenco tough with high alloy abrasive resistant steel to give a long, durable production life.
- All Kenco buckets are available for use with a coupler or direct pin on.

FROM SMALL TO  
MASSIVE,  
KENCO HAS THE  
ATTACHMENT FOR  
YOUR WHEEL LOADER  
OR DOZER MACHINE

[www.kenco.com](http://www.kenco.com)

**Kenco can provide a bucket to meet any requirements you might encounter in your tasks involving material handling.**

### LOADER BUCKETS

- General Purpose or light material buckets for easy loading and material retention when traveling.
- From 2.25 to 40 cubic yards



### SIDE DUMP BUCKETS

- Maximize your versatility in confined areas such as loading trucks on the side of the road.
- Right hand or left hand dump available.
- From 1.0 to 3.5 cubic yards



### ROLL OUT BUCKETS

- Increase dump height.
- Increase dump reach.
- Maximize material capacity
- Choice of pin-on or coupler lugging.



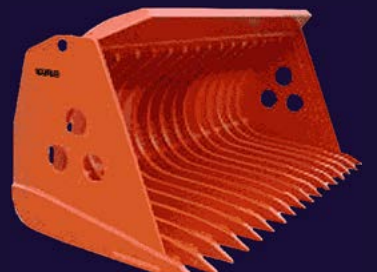
### GRAPPLE BUCKETS

- Two independent clamps.
- Bolt-on cutting edges or teeth available.
- Twin hydraulic cylinders.
- Individual grapple clamps allow for carrying uneven payloads.



### SKELETON BUCKETS

- Custom tine spacing available.
- Available in models for Severe Duty or Heavy Duty
- Bolt-on cutting edges or teeth available.
- Available as a pin-on or with coupler lugging.



### MULTI PURPOSE BUCKETS

- Multi-purpose buckets are built to maximize a variety of applications...Clamp, Load, Doze and Dig.
- From 1.0 to 3.5 cubic yards







## LOADER/ DOZER ACCESSORIES

Add flexibility and increase the functionality of your loader or dozer with these Kenco attachments.

If you're looking for ways to expand the possibilities of your machine, Kenco can provide the means for you to do it.

Call our team of Kenco engineers to ensure you get the right setup for your machine.

Convert your loader downtime into an increased production time and profit.

### RAKES

Grapple rakes, debris rakes, and moldboard rakes are ideally suited for handling demolition debris or piling trees and limbs.



Grapple Rake



Moldboard Rake



Brush/Debris Rake

### MASTER HITCHES

- 'Z' Bar or four ram geometry wheel loader linkage.



### JIB BOOMS

- fixed  
- telescoping



### MILL YARD CARRIAGE FORKS



### SNOW PLOWS



### SNOW PUSHERS



[www.kenco.com](http://www.kenco.com)

## FORKLIFT ACCESSORIES

Give your forklift the versatility to lift objects that aren't possible with the forks.

This unique adapter has a lifting eye that will allow you to attach any Kenco Lifting Product with a sling and shackle assembly.

By sliding both forks through the adapter and securing it to the bulkhead, our lifting products can be used to lift, move, and place different objects.



**ADAPT YOUR FORKLIFT  
TO WORK WITH  
KENCO ATTACHMENTS**



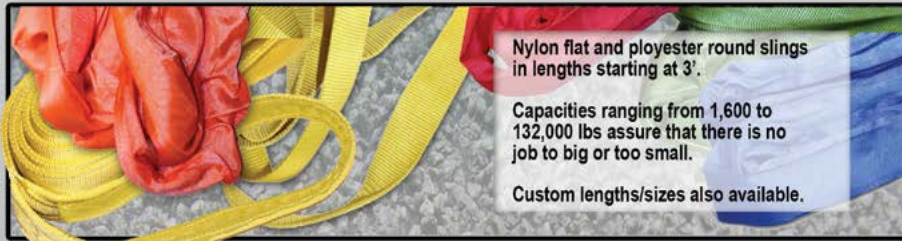


# Looking for rigging supplies?

  
liftingproducts  
.com

**KENCO**  
A Division of Kenco

## SYNTHETIC SLINGS



Nylon flat and polyester round slings in lengths starting at 3'.

Capacities ranging from 1,600 to 132,000 lbs assure that there is no job to big or too small.

Custom lengths/sizes also available.

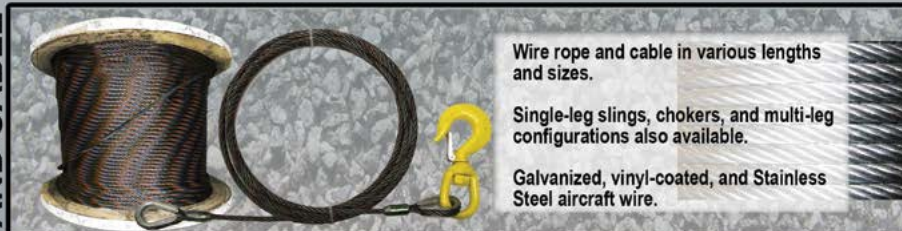
## RIGGING HARDWARE



Screw pin and safety bolt shackles 1/3 ton to 35 ton capacities in both domestic and import.

Hoists, blocks, and a wide variety of hooks and fittings with new products added frequently.

## WIRE ROPE AND CABLE



Wire rope and cable in various lengths and sizes.

Single-leg slings, chokers, and multi-leg configurations also available.

Galvanized, vinyl-coated, and Stainless Steel aircraft wire.

## CHAIN AND COMPONENTS



Full line of bulk chain, chain slings, hooks, and other chain components.

Grade 70, 80, and 100 available.

Grade 100 chain provides 25% higher load limits than the grade 80 counterpart.

**TOLL-FREE 1-888-454-3837**

A division of

