

Section V. Operation.

! DANGER Before attempting to use the Lifter device **ALWAYS** perform a test lift on the intended object(s) to confirm proper operation. **DO NOT** use a Lifter to handle objects beyond the rated capacity or range.

! DANGER Manipulation of the Lifter by ground personnel for the purpose of alignment with load shall only be done with Lifter suspended above the block. **KEEP ALL HANDS AWAY FROM THE LIFTER DURING OPERATION.**

A. Automatic operation:

Ensure that the Lifter's capacity and range are appropriate to the block to be handled.
 Position 0 R Q X P H Q W Lifter near center of object to be lifted.
 Lower 0 R Q X P H Q W Lifter to object, taking care to minimize impact.
 Ensure that all persons are clear of 0 R Q X P H Q W Lifter and block.
 Release tension on lift cable to cycle the actuator.
 Raise 0 R Q X P H Q W Lifter in a smooth motion. Do not "jerk".
 Deposit at desired location.
 Release tension on lift cable to cycle the actuator. (Note: avoid undue slamming of the 0 R Q X P H Q W Lifter into open position to prolong actuator life.)
 Remove 0 R Q X P H Q W Lifter. (0 R Q X P H Q W Lifter in open position automatically)

Tip: The majority of wear on the R P H W Lifter and associated components results from shock loading, impacting, and poor alignment of the R P H W Lifter with the load. Minimizing these incidents will greatly extend the life of the R P H W Lifter and consumables.

B. **Avoid Jarring, swinging, and otherwise unnecessary manipulation of the load.**

C. **Avoid handling of loads off center.**

D. **DO NOT USE THE MONUMENT LIFTER TO PICK MULTIPLES OF ITEMS IN A SINGLE PICK.**



170 State Route 271
Ligonier, PA 15658
1-800-653-6069

E. Observe all safety practices associated with operation of hoist machinery.

F. DO NOT USE MONUMENT LIFTER TO DRAG LOADS.

G. DO NOT ALLOW LOAD (BLOCK) TO CONTACT ANY SURFACE/OBJECT WHILE BEING HANDLED.



The Monument Lifter handling device produces grip proportional to and dependent on the weight of the load. It is for this reason that while in operation the Monument Lifter and load NEVER be allowed to contact other items.



Section VI. Maintenance

A. Daily:

1. Visually inspect Monument Lifter for signs of stress and wear.
2. Check that bolts and nuts are snug.
3. Check that key-way area of the attachment and lift body are properly seated.
4. Ensure free movement of all components.
5. Ensure that all warning labels are present and readable.
6. Check that the actuator mounting screws are snug and seated.
7. Lubricate all moving mechanisms with penetrating oil.
8. **LUBRICATE ACTUATOR WITH LIGHT PENETRATING OIL ONLY (WD40™)**

B. Annually*

1. Remove pivot bolts and coat with grease.
2. Inspect holes, pins, bolts etc. for wear. See sect VII for criteria.
3. Remove actuator, clean and lubricate with light penetrating oil – check for signs of wear, replace if necessary.

* *Frequency depends on usage, environmental conditions, etc.*

Section VII. Inspection Criteria

THE MONUMENT LIFTER UNIT AND ALL OF ITS ASSOCIATED COMPONENTS SHALL BE REMOVED FROM SERVICE AND TAGGED APPROPRIATELY UNTIL RECERTIFICATION BY A QUALIFIED INDIVIDUAL IN ANY OF THE FOLLOWING CONDITIONS:

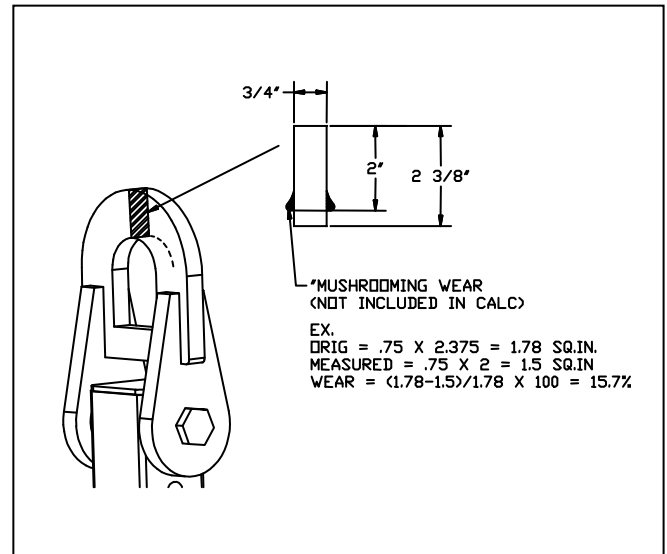
A. General

1. Cracking in any component or member.
2. Cracking in any weld.
3. Visible distortion in any member.
4. Visible distortion in any Bolt/Pin/Shaft.

B. Specific

1. Lift Bail

- a. The lift bail shall be replaced if a 20% loss in cross-sectional area from the original member(s) can be demonstrated. Note: cross section of welds, “mushroomed” wear faces, and burrs are not accounted for as cross-sectional area. (See ill.)



2. Holes.

- a. Any members through which bolted or pinned connections pass shall be replaced if a 10% loss in cross-sectional area from the original member(s) can be demonstrated. Note: cross section of welds, “mushroomed” wear faces, and burrs are not accounted for as cross-sectional area.

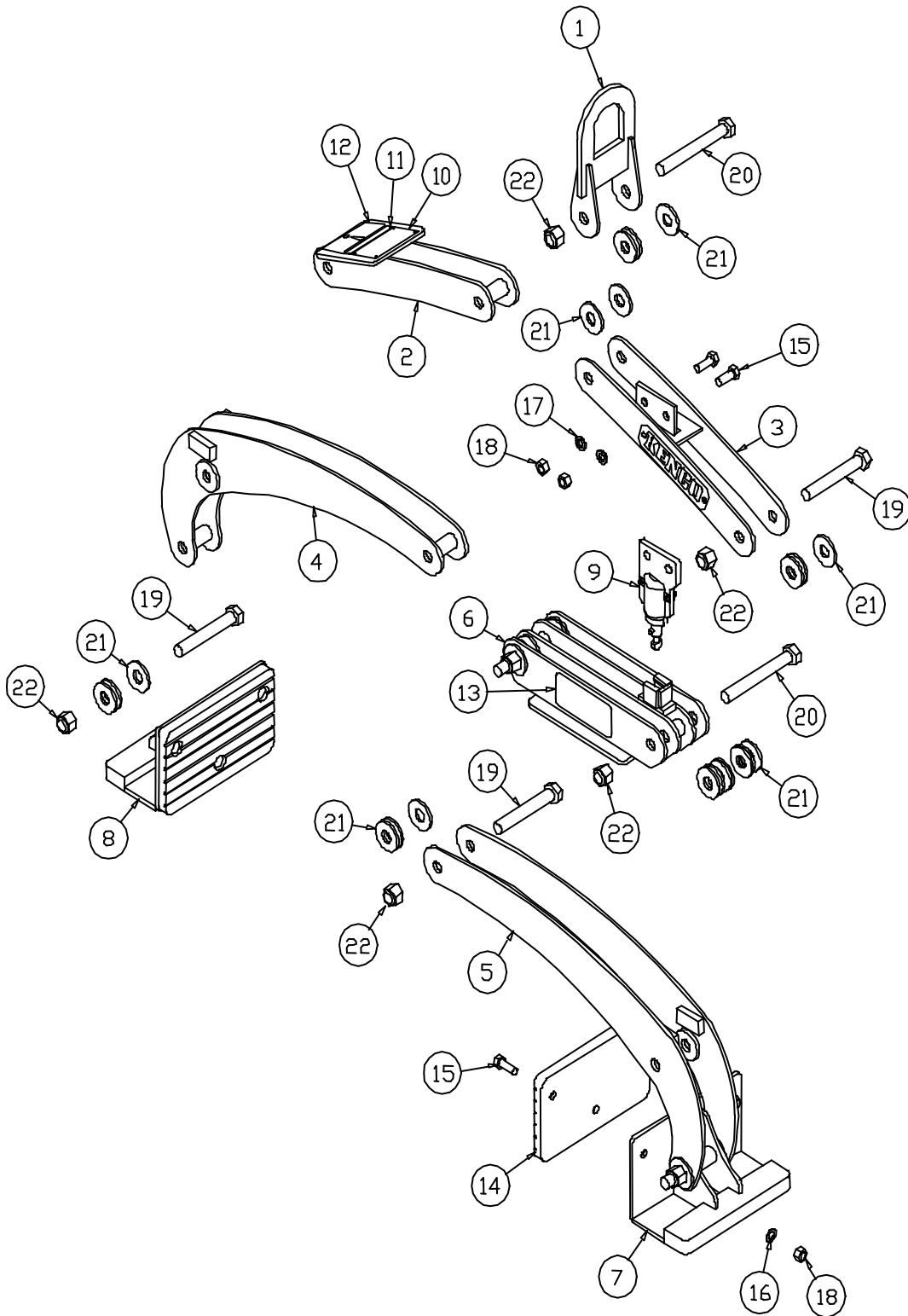
3. Pins/Bolts.

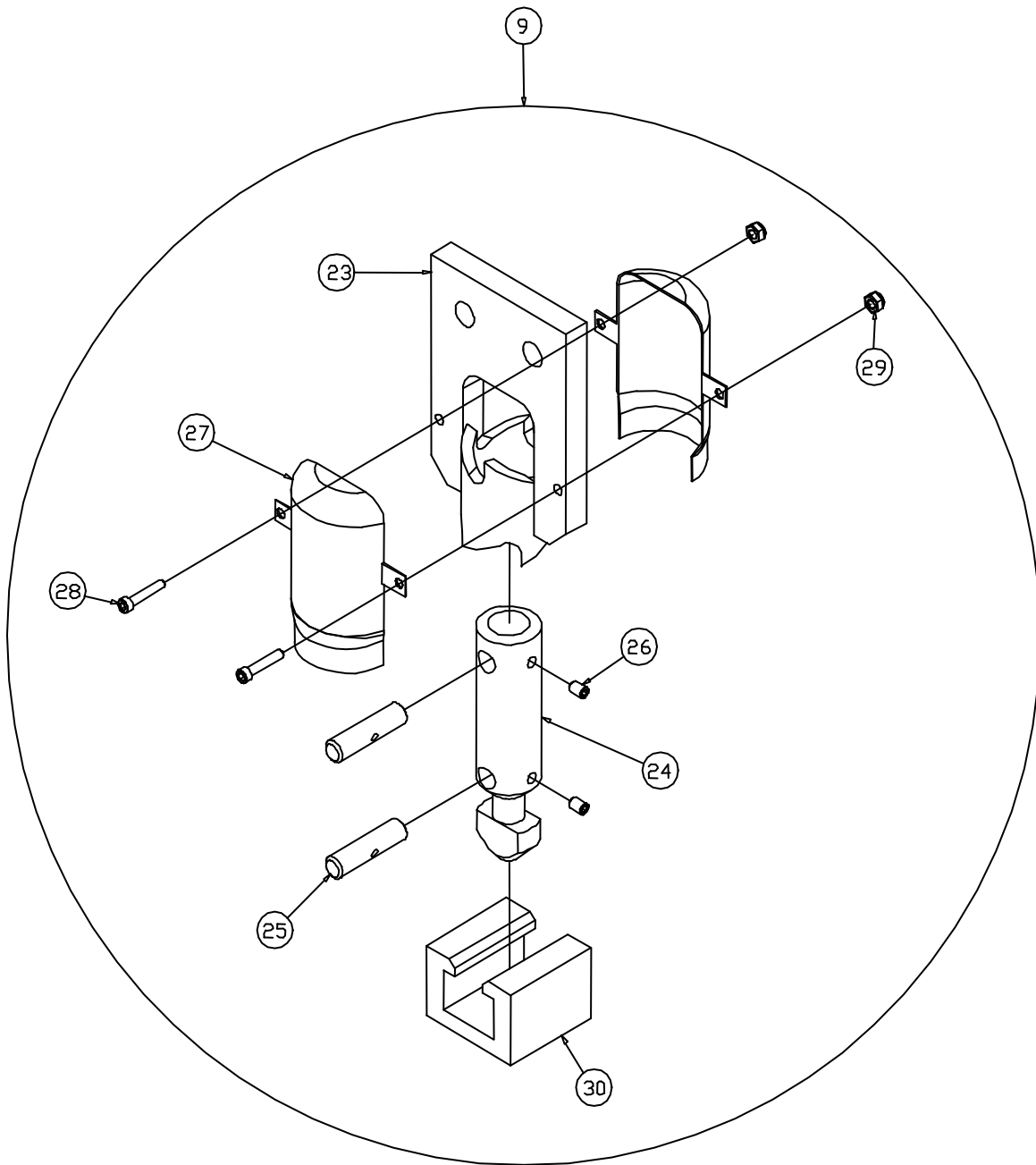
- a. Any visible deformation of a pin, shaft or bolt shall require replacement of that part.

4. Pads – Replace if:

- a. For units utilizing urethane gripping pads, if surface of any given mounting bolt is not at least 3/32” below the surface of the pad,.
- b. Any de-lamination of the pad from the backing plate.
- c. Any scarring, chunking, or missing pad material constituting a total combined loss of surface area greater than 3 sq. in. per pad.
- d. Any single scar, chunk, or missing pad face that is greater than 1 sq. in per pad.

Section VIII. Parts/Drawings







10

KENCO CORPORATION	
877-4ATTACH	
MODEL	<input type="text"/>
USAGE	<input type="text"/>
CAPACITY	<input type="text"/> WT. <input type="text"/>
SERIAL NO.	<input type="text"/>

11

THIS LIFTER IS DESIGNED TO ASME BTH-1	
DESIGN CATEGORY <input type="text"/>	SERVICE CLASS <input type="text"/>

12

 WARNING	
	<p>Read and understand operator's manual before using this equipment.</p> <p>Failure to follow operating and maintenance procedures could result in death or serious injury.</p>

13

<p>DANGER</p> <p>DO NOT STAND UNDER OR NEAR</p> <p>WHILE MACHINE IS OPERATING</p>
--



NOTE: MODEL AND SERIAL NUMBER OF LIFTER MUST ACCOMPANY PART ORDERS.

Item Number	Quantity	Part Name
1	1	TSL15C3T12 LIFTEYE ASSY.
2	1	TSL15C3T12 NARROW ARM ASSY.
3	1	TSL15C3T12 WIDE ARM ASSY.
4	1	TSL15C3T12 NARROW LEG ASSY.
5	1	TSL15C3T12 WIDE LEG ASSY.
6	1	TSL15C3T12 CENTER LINK ASSY.
7	1	TSL15C3T12 NARROW PAD ASSY.
8	1	TSL15C3T12 WIDE PAD ASSY.
9	1	SMALL ACTUATOR
10	1	KENCO ID TAG
11	1	BTH TAG
12	1	SMALL WARNING STICKER
13	2	DANGER STICKER
14	2	MI125 PAD
15	8	.5 X 1.25 CAPSCREW
16	6	.5 INTERNAL LOCK WASHER
17	2	.5 LOCK WASHER
18	8	.5 NUT
19	4	.75 X 5 CAPSCREW
20	3	.75 X 6 CAPSCREW
21	31	.75 FLAT WASHER
22	7	.75 NYLOCK NUT
23	1	SMALL ACTUATOR BODY
24	1	SMALL ACTUATOR SHAFT
25	2	SMALL ACTUATOR PIN
26	2	SMALL ACTUATOR SET SCREW
27	2	SMALL ACTUATOR COVER
28	2	SMALL ACTUATOR COVER SCREW
29	2	SMALL ACTUATOR COVER NUT
30	1	SMALL RECEIVER BLOCK



Section IX. Warranty

A. Policy

1. KENCO Corporation (KENCO) warrants the Kenco Monument Lifter lifting device (not including pads or consumable items) sold by KENCO to be free from proven defects in material and workmanship for a period of six (6) months from the delivery date to the original customer.
2. Warranty is limited to replacement of parts and/or assemblies, which upon inspection by KENCO are deemed to be defective in material, workmanship, or both.
3. Warranty shall not extend to products that have been altered or repaired in any way without the express written consent of KENCO.
4. Warranty shall not extend to any product that has been misused, abused, or improperly applied or any defect resulting thereof.
5. Defects and corrosion that are the result of improper storage and/or maintenance are not warrantable.
6. Wear items such as Pads, Pins or Lifting bails etc. are not considered for warranty claims.

B. Disclaimer

1. **THIS WARRANTY IS EXCLUSIVE AND IN LIEU OF ALL OTHER REPRESENTATIONS AND WARRANTIES EXPRESSED OR IMPLIED, AND KENCO EXPLICITLY DISCLAIMS AND EXCLUDES ANY IMPLIED WARRANTY OF MERCHANTABILITY FOR A PARTICULAR PURPOSE. IN NO EVENT SHALL THE END USER BE ENTITLED TO ANY CONSEQUENTIAL, INCIDENTAL OR CONTINGENT DAMAGES OF ANY KIND ARISING OUT OF BREACH OF CONTRACT, WARRANTY (INCLUDING NEGLIGENCE AND STRICT LIABILITY) OR OTHER THEORIES OF LAW, WITH RESPECT TO PRODUCTS SOLD OR SERVICES RENDERED BY KENCO, OR ANY UNDERTAKINGS, ACTS OR OMISSIONS RELATING THERETO.**